

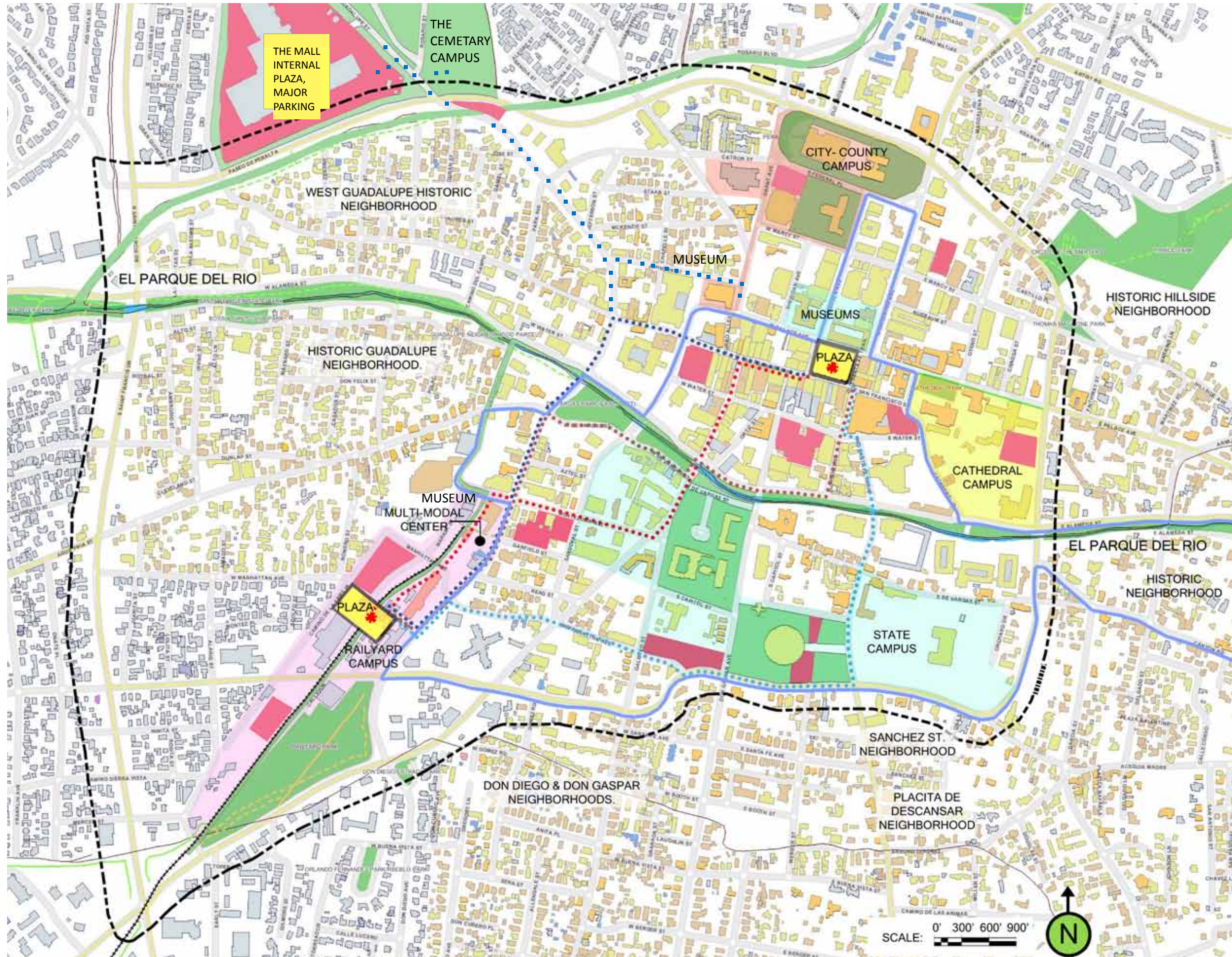
# PLAZA



to



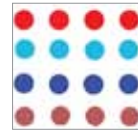
# PLAZA



# EXPLORE OUR NEW + HISTORIC CITY DIFFERENT



Walk Plaza to Plaza



4 Suggested Walks



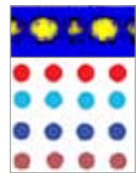
Park Your Car in Easy to Find Parking Lots



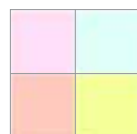
Plant More Trees, Add Low Walls between Parking Lots + Streets, Follow Nature Trails



Ride the Train, Shuttle or Bus at the Multi-Modal



Follow Night Lights w Permeable Art at Your Feet



Visit our Community Campuses



Support the Health of Your Local Friends



Live in + Explore our Historic Neighborhoods



“THE SUSTAINABLE CITY IS DIVERSE, JUST, BEAUTIFUL, CREATIVE, ECOLOGICAL, COMPACT, AND ENCOURAGES EASY FACE TO FACE SOCIAL INTERACTIONS.”

*Richard Rogers and John Young, London and Santa Fe Architects*

experimentation + creativity

**CREATIVE  
SANTA FE**  
Imagined Futures

and

**SUBY BOWDEN +  
ASSOCIATES**

## Walk "Plaza to Plaza" or "Strike Out On Your Own":

15 to 30 min. walks between the New Railyard Plaza + the Historic SFe Plaza.

●●●● P2P-Historic Guadalupe Trading Route-leads you along the shopping districts between the two plazas, and along the old train routes to Colorado.

●●●● P2P-SFe River Trail-is for nature lovers, connecting trails from SW SFe, thru the Railyard, or follow "Rio del Parque" between foothills + Rio Grande.

●●●● P2P-Capitol Hill Trail-leads you onto historic Capitol Hill for the most beautiful view of downtown SFe, onto the historic SFe wagon trail to the Plaza.

●●●● P2P-Ruta Corta-this is the shortest-fastest route between the Plazas.

Imagine the future when the Campus District develops into the Garden District.



## Park Your Car in Easy to Find Parking Lots:

Downtown Santa Fe has many new parking structures. We have about 900 new parking spots in the Railyard, 300 new parking spots at the Capitol. City Hall has a new underground garage, and there is a tremendous amount of surface parking throughout downtown. This is good news and bad news... because many of these surface parking lots (like the Hilton) cause a visual gap in the urban fabric. We recommend surface parking lots follow Historic code and construct beautiful walls with tall trees and shrubs to shield cars... Better yet construct parking garages in the middle, wrapped on the outside with affordable housing, or small business incubator spaces, and sidewalk cafes, to



## Plant More Trees,install yard walls,cool down

## Santa Fe, and follow theNature Trails:

Cooling Santa Fe is paramount in the midst of drought. Just as we have a "National Forest" up in the Sangre de Cristo Mountains, we have a "Community Forest" within the Santa Fe limits. The City has chosen to address the health of the Santa Fe River and the Santa Fe Community Forest, and has committed to a living river with historic + intermittent perennial flows, and grey water reuse. A healthy Santa Fe river + watershed basin provides significant recharge of the local aquifer, and a safe location for animal



## Ride the Train,Shuttle or Bus at the Multi-Modal:

Be sure to ride the great New "Rail Runner Train", with 9 visits a day between Albuquerque + SFe. Railyard plans include a new Contemporary Art Museum + Multi-Modal Transportation Center. City + merchants support free shuttles that travel every 15 mins. btwn Plazas + Canyon Rd. We encourage the City to extend the shuttle to DeVargas Mall.Thank you for the St. Francis Underpass !!



Thank You's to the Innovative City + Citizens of SFe, Downtown Vision Plan, 1995 River Plan, Jeff Speck + Walkable City, Downtown Austin Alliance, Railyard Plans,

## Follow Night Lights w Permeable Art at your Feet:

One of our new delights in SFe is the line of “LED Blue Lights” above the Railroad tracks, which provide a great starry night quality, and a sense of direction. We recommend Santa Fe continue to add low energy LEDs in subtle colors + lines throughout downtown, so people can easily find their way between Plazas. The subtle change in colors could also indicate entry into a new District or Campus area. On prioritized streets, we recommend implementing the “City’s 2008 Sustainability Plan” of removing asphalt + concrete sidewalks; and replacing them with decorative permeable surfaces, to help cool Santa Fe. “Follow the Yellow Brick Road”...with high quality, sidewalk art along these same streets.



## Visit Our Community Campuses:

The “City’s 2007 Downtown Vision Plan” identified Subdistricts for future master-planning. We encourage cohesive campus-like environments be developed in the future, for a revival of the historic large scale Garden District along the Santa Fe River in Downtown Santa Fe. Bishop Lamy’s Campus is the 1870’s site of the Cathedral, Garden, Pond + Hospital. The Railyard Campus is the 1880 Railroad site, and now an extensive acequia botanical garden. The City-County Campus is one of the original Native American settlement sites, and currently houses a civic plaza, and City and Federal wooded pocket parks. The State Campus has extensive Roundhouse gardens +parking lots in need of plantings.



## Support the Health of Your Local Friends:

Santa Fe is a sustainable city; where justice, food, shelter, education, health and hope are fairly distributed. Downtown SFe has many programs within the Paseo de Peralta loop. The Historic Acequia Madre System + Farmer’s Market support local Agricultural programs. The Santa Fe Homeless Shelter, El Castillo Senior’s Center, and new Affordable Housing sites have been constructed, and encouraged for the future. A strong Native American Arts program daily operates under the Palace of the Governor’s Portal, and through Summer Markets. Surrounding all of these health programs are easy access to Churches, Schools, Groceries, Libraries, Health care, Fiber-Optic, Wi-Fi and



## Live In + Explore our Historic Neighborhoods:

Existing neighborhoods have had architectural styles ordinances since the 1950’s to protect the intimate and walkable scale. The 1990’s offered Early Neighborhood Notification Systems, and Neighborhood Protection Overlays, to protect bridges and acequias , and limit historic families feeling pushed off their land. Today the Railyard + Historic Plazas have strong, summer family programs, with movie nights in the park, and all types of outdoor music, and



Laura Carpenter, Cyndi, Bill, Katelyn, Faith, Kenneth, Sandy, Julia, Sunil, Bob + Suby





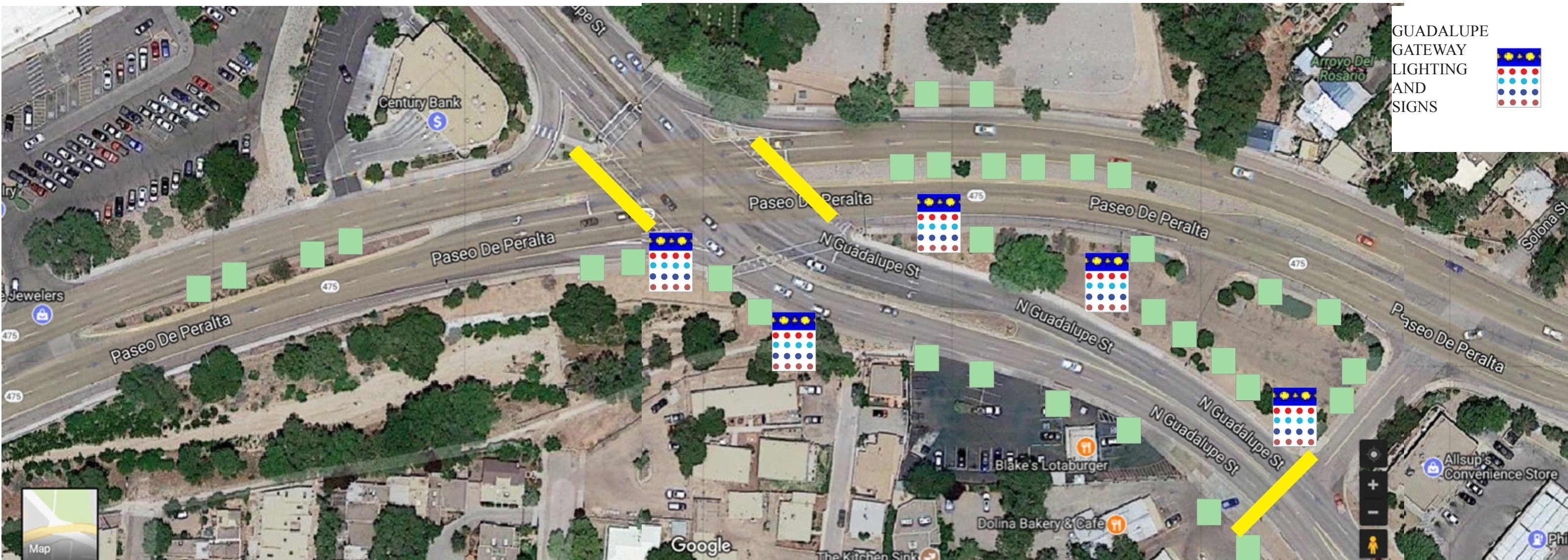
**GUADALUPE AT DEVARGAS MALL:**

Plant more trees,  
Add lowstreet walls,  
Change to permeable paving,  
Add internal sidewalks,  
Reanalyze parking count to address short visits, follow the nature trails, add food trucks and outdoor Plazas and Activities

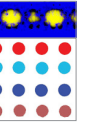


Extend Mall Plantings Along Guadalupe Street Sidewalk

**THE CEMETARY CAMPUS,**  
Both the Catholic Church and the National Cemetary, Have Very Beautifully Planted Old Trees and Grounds, Adjacent To Some Of The Oldest i Historic Neighborhoods



GUADALUPE  
GATEWAY  
LIGHTING  
AND  
SIGNS



GUADALUPE AT PASEO DE PERALTA NORTH:



Plant more trees,  
Add lowstreet walls,  
Change to permeable paving,  
Reanalyze parking count to address short visits, follow the nature trails



1960s and 70s Pattern of Small Homes with front courtyards were removed (or maybe still remaining) but all landscaping is gone, with large asphalt for car parking....we recommend adding low walls at the streets and landscaping between the walls and the streets... and recommend removing asphalt to be replaced with permeable paving.



1880's Historic Pattern of Small Homes (as seen at the corner of Guadalupe and West San Francisco Street) with front courtyards and landscaping .....to be encouraged at Lots currently filled with asphalt..

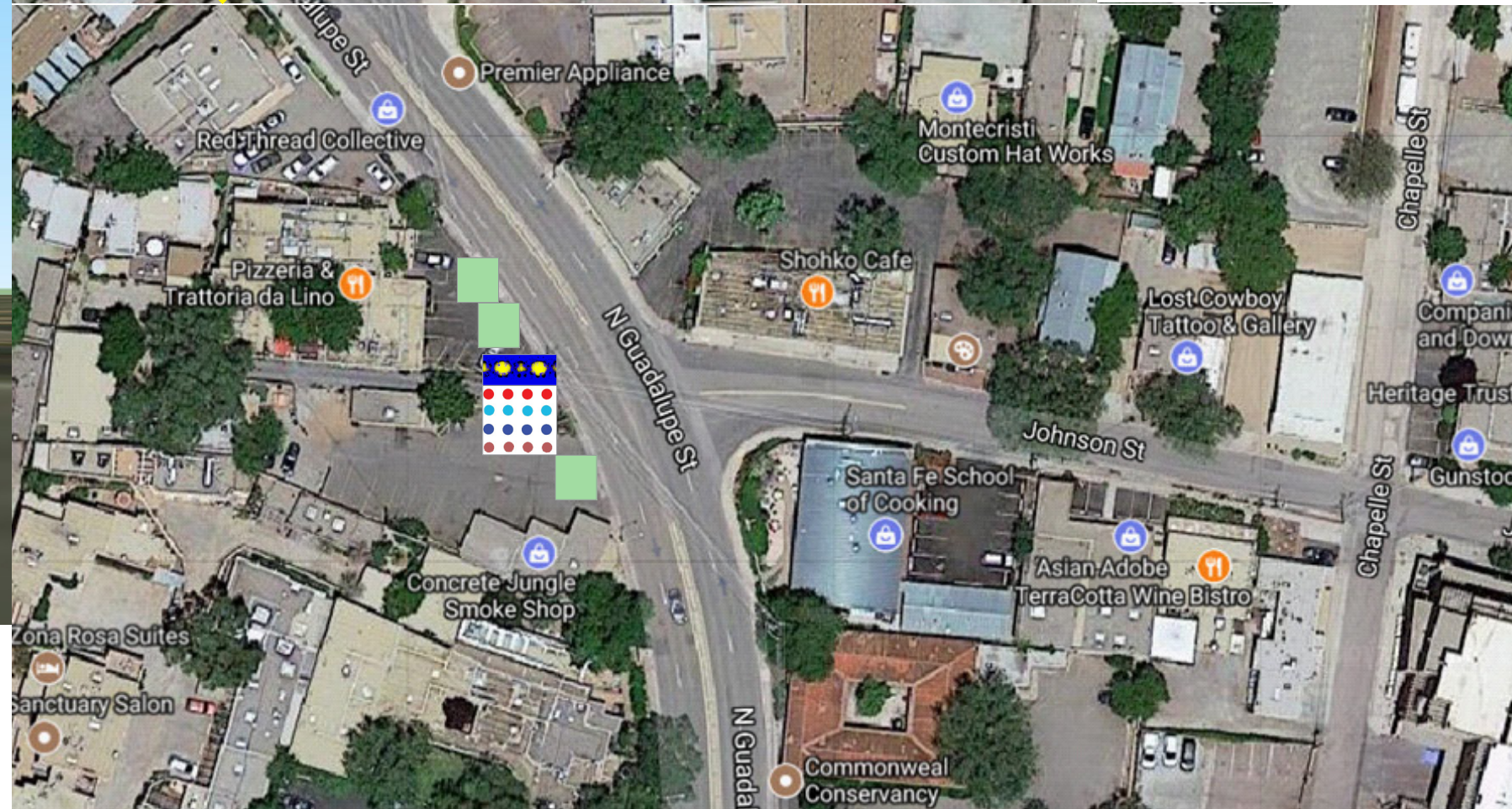
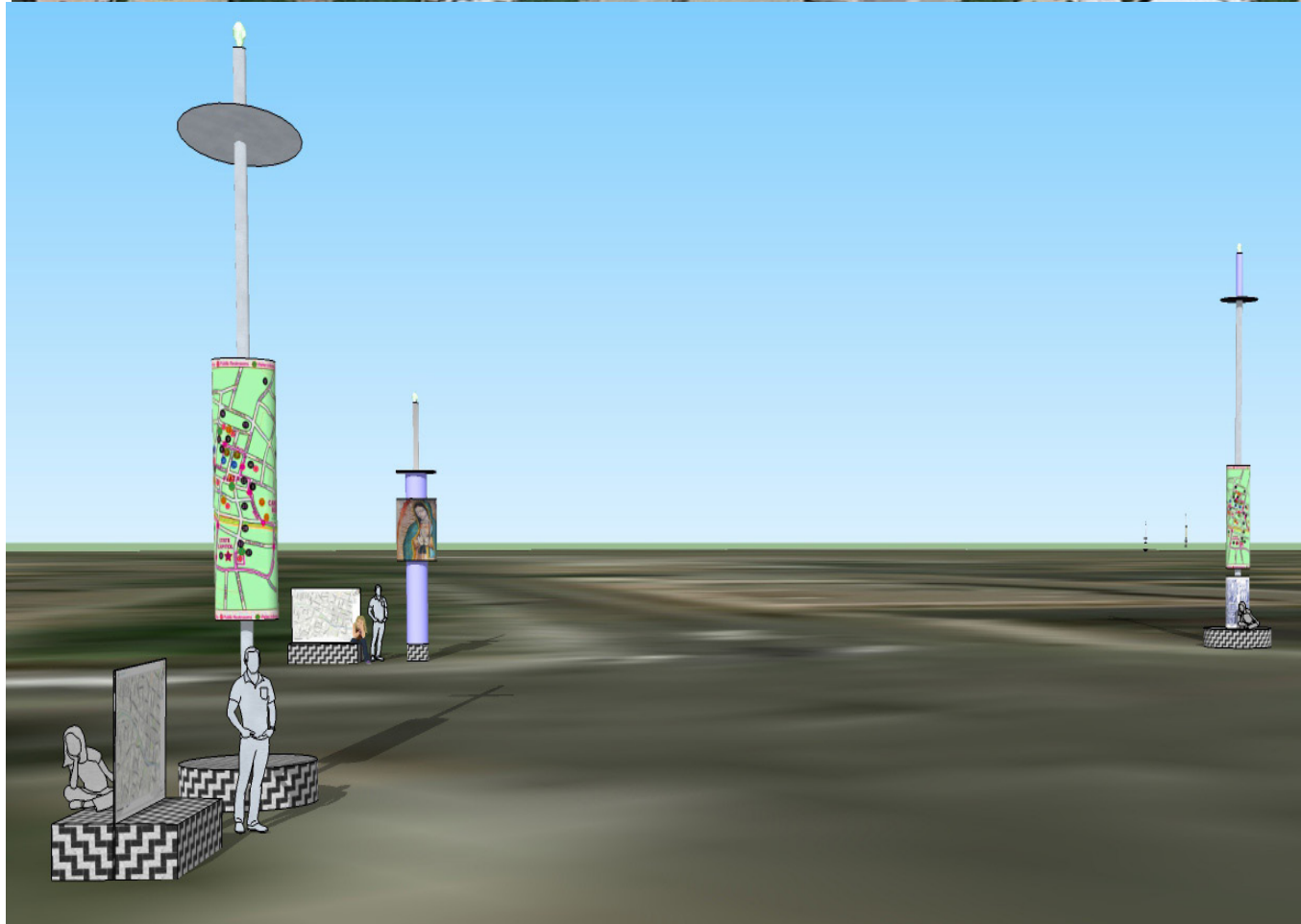
install pedestrain controlled  
...walkways (like the Railyard)

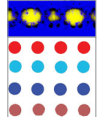


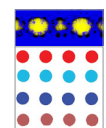
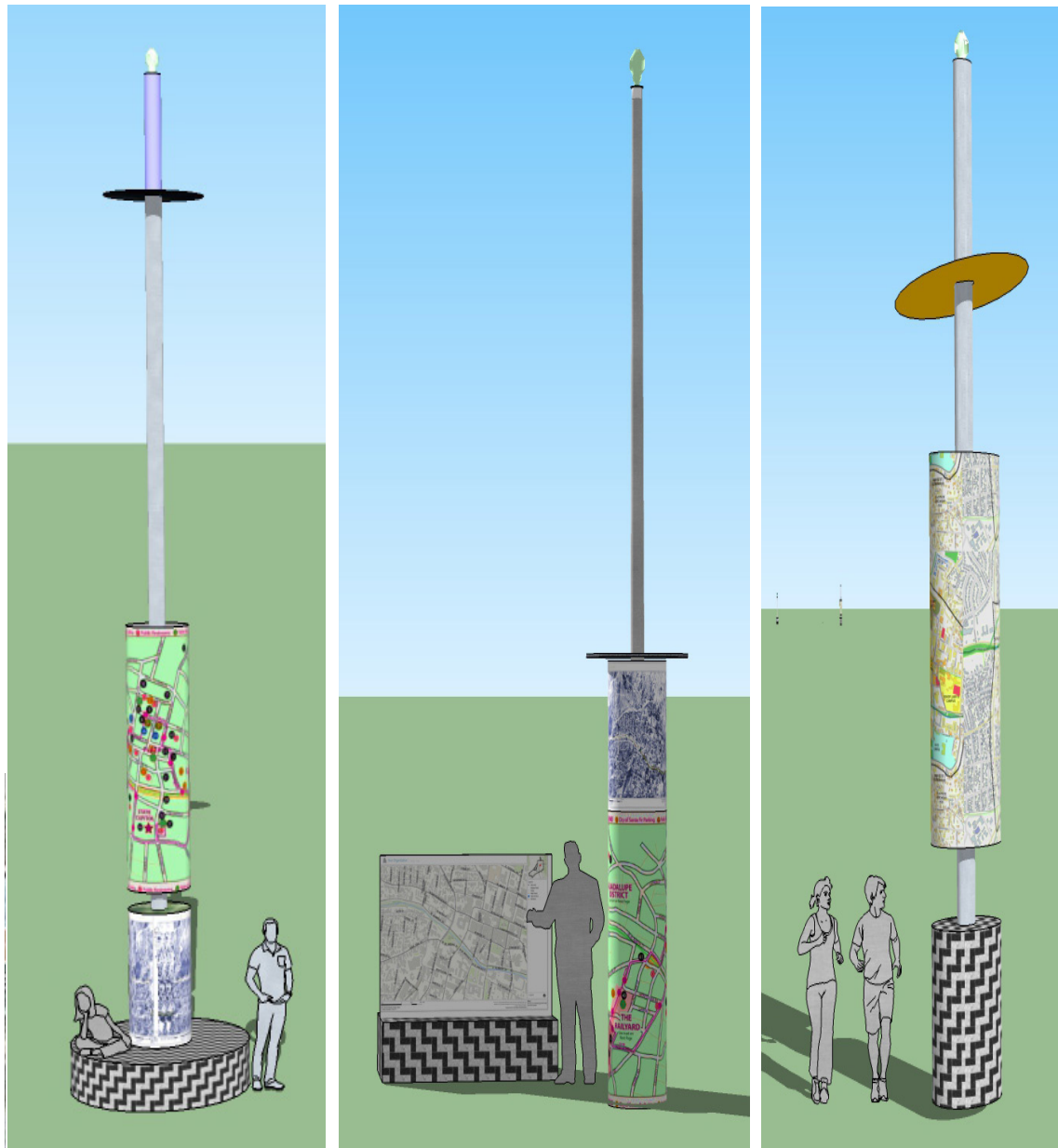
From Alameda Street to Shoko Restaurant on Johnson Street, the old residential pattern still exists on the west side of the street.

However, on the East side of this same area, the old homes were taken out during the HUD urban renewal stage. Allowing for the Hilton and the Eldorado Hotels to move in. For this reason large scale parking lots exist at the Hilton., that we discuss below.

From Shoko Restaurant north, some of the old buildings still remain. However new buildings pull back from the street in a sea of asphalt. We recommend pulling street walls back to the street, and adding landscape and permeable surfaces.

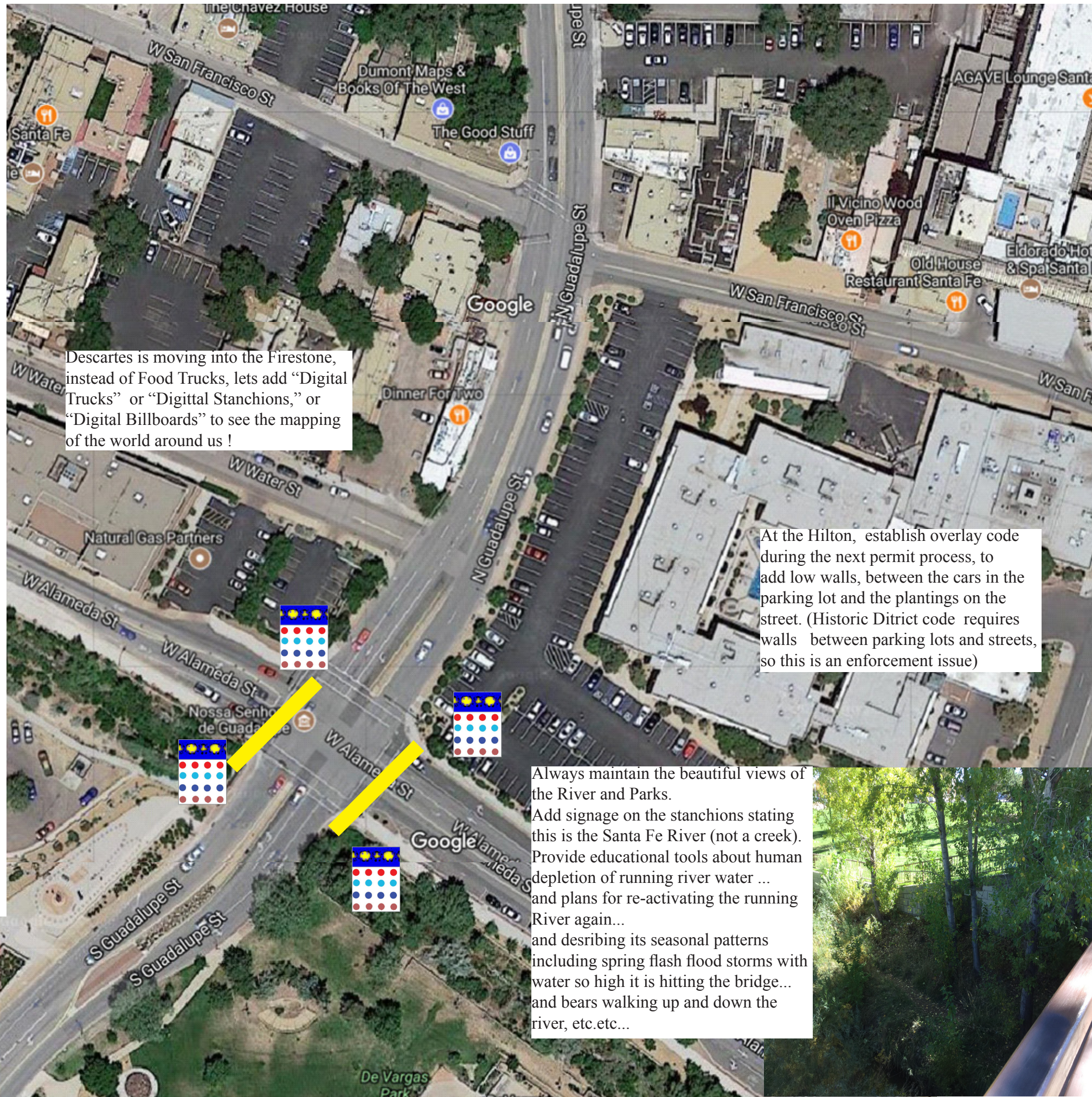


 The stanchions are powered by solar panels positioned just below the LED tips. LED's also back light information kiosk panels in the commercial areas (as appropriate) to serve evening pedestrians. Benches are provided near the North Guadalupe "Gate" to serve as a meeting or resting place. They are also provided at the West Alameda intersection to encourage visitors to linger to enjoy the sounds and sights of the Santa Fe River.



**GUADALUPE AND ALAMEDA AT THE RIVER:**

The illuminated stanchions extend the celebratory vocabulary of the open air Farmers Market and blue lights in the Railyard. In the Guadalupe District they signal a North Guadalupe “Gateway to the Center City” where it intersects Paseo De Peralta, they mark the path into the center and celebrate the important intersection of Guadalupe and West Alameda. The stanchions are intended to be easily seen by moving vehicles but are also designed to serve pedestrians. For city visitors and residents alike, the lower portion becomes effectively a type of kiosk which can offer city sights information, maps of local neighborhoods, underscore points of interest and offer a graphic refer-



Descartes is moving into the Firestone, instead of Food Trucks, lets add “Digital Trucks” or “Digittal Stanchions,” or “Digital Billboards” to see the mapping of the world around us !

At the Hilton, establish overlay code during the next permit process, to add low walls, between the cars in the parking lot and the plantings on the street. (Historic Ditric code requires walls between parking lots and streets, so this is an enforcement issue)

Always maintain the beautiful views of the River and Parks. Add signage on the stanchions stating this is the Santa Fe River (not a creek). Provide educational tools about human depletion of running river water ... and plans for re-activating the running River again... and desribing its seasonal patterns including spring flash flood storms with water so high it is hitting the bridge... and bears walking up and down the river, etc.etc...

