

FRIENDS OF ARCHITECTURE SANTA FE CHARRETTE

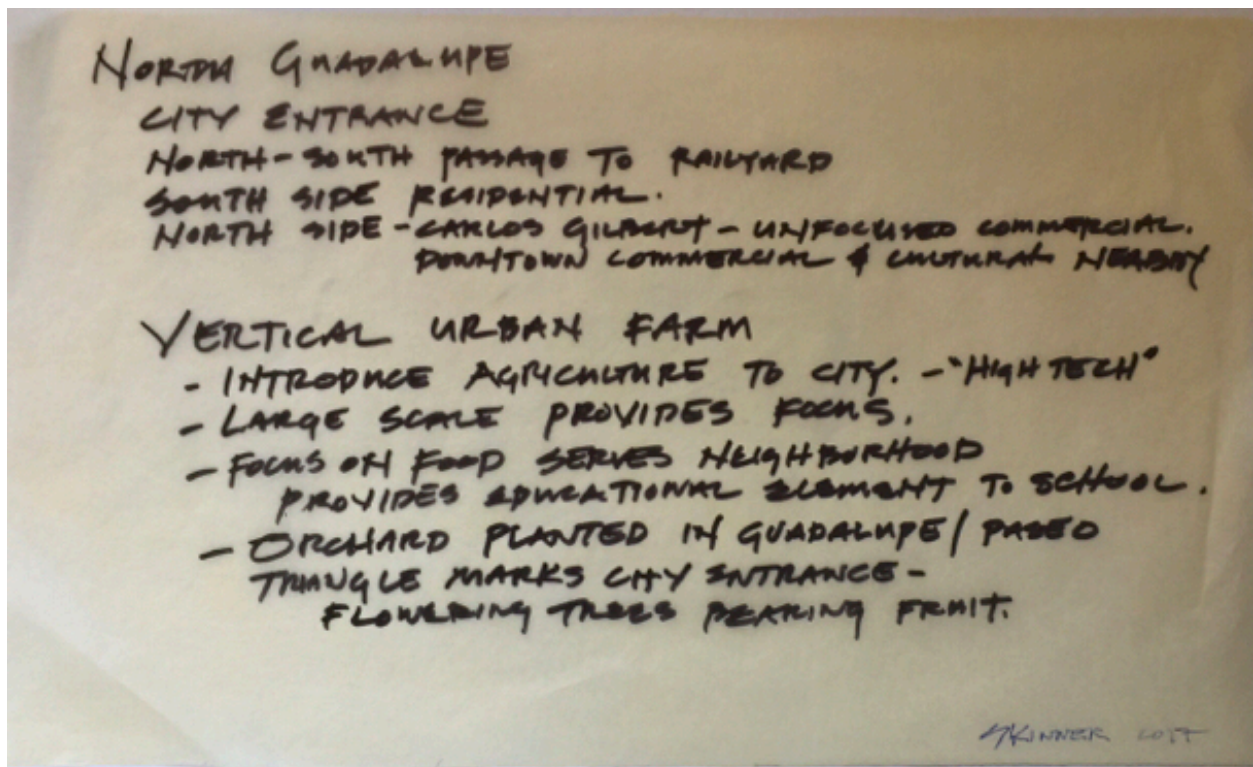
NORTH GUADALUPE: THE PUBLIC REALM

OCTOBER 2017

POSSIBLE SOLUTIONS TO THE NORTH GUADALUPE STREET CORRIDOR
BETWEEN AGUA FRIA STREET TO THE PASEO DE PERALTA

PINUP BY CONRAD SKINNER DESIGN

A VERTICAL URBAN FARM AS CITY OF SANTA FE ENTRANCE



PRINCIPAL POINTS OF THE IDEA

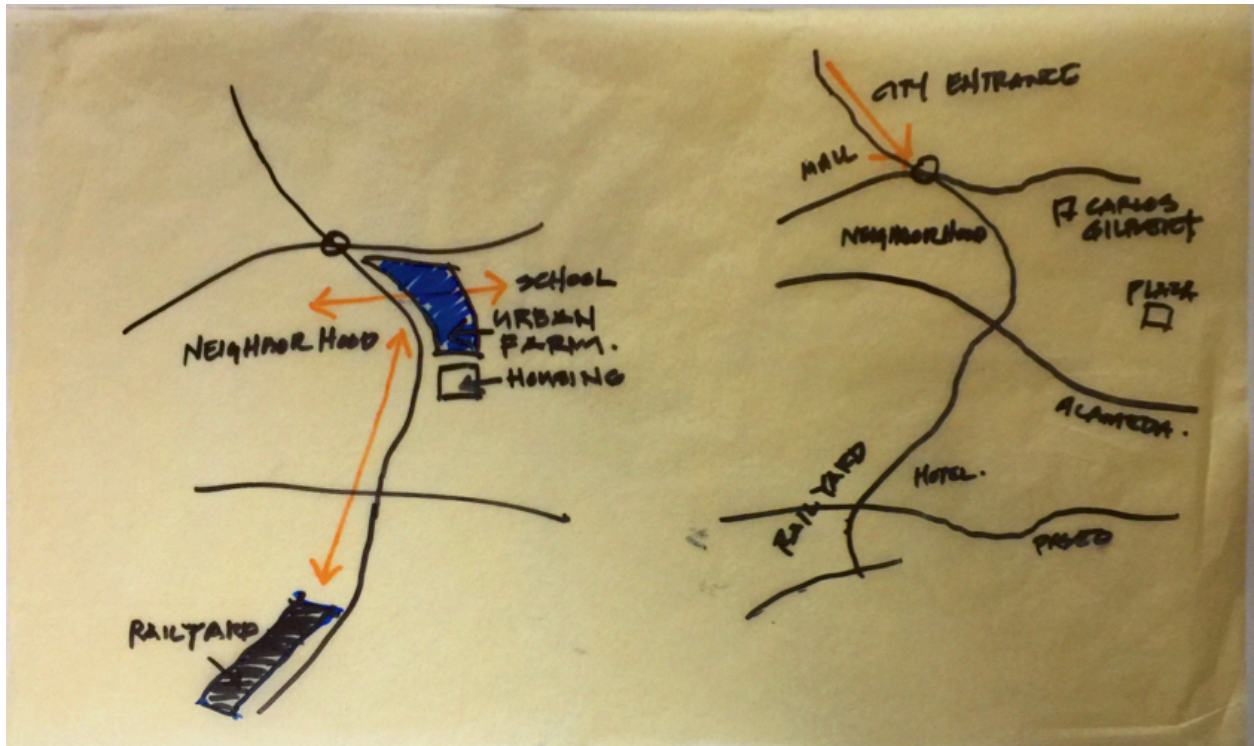
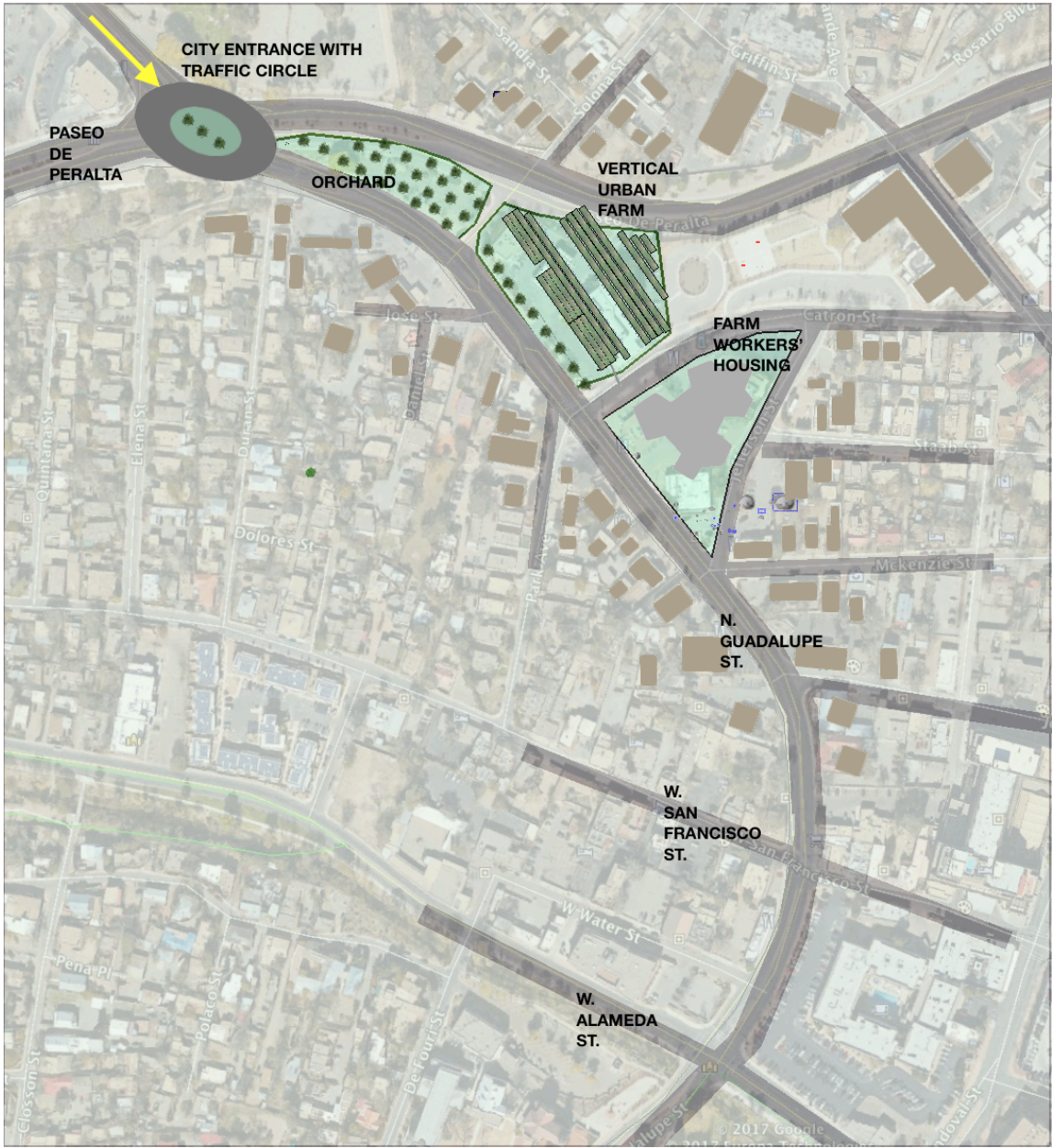
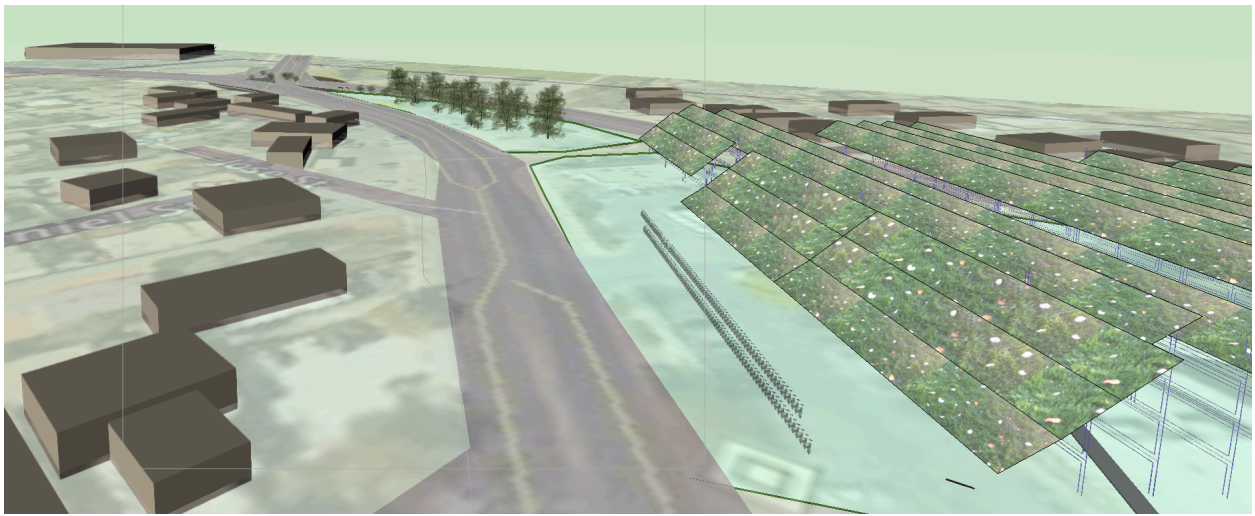


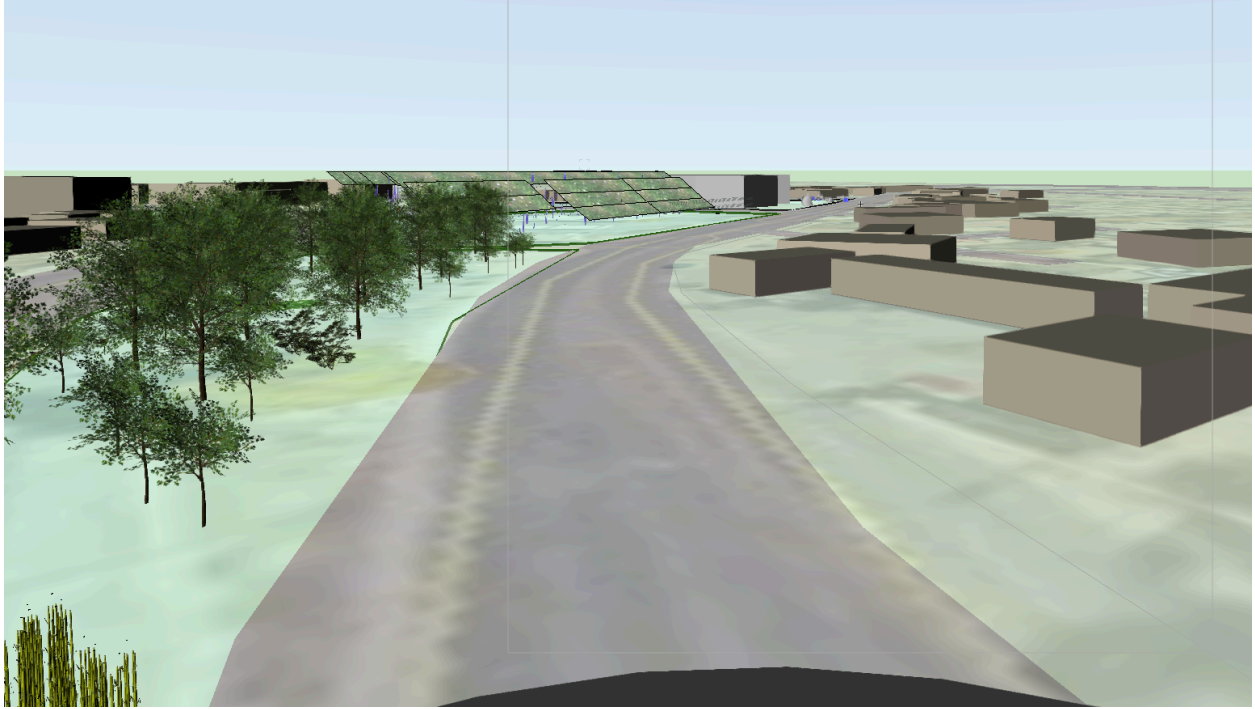
DIAGRAM OF THE IDEA



VERTICAL URBAN FARM AS CITY OF SANTA FE ENTRANCE SITE CONCEPT



VERTICAL URBAN FARM VIEW TO NORTH



ORCHARD AND VERTICAL URBAN FARM LOOKING SOUTH FROM TRAFFIC CIRCLE